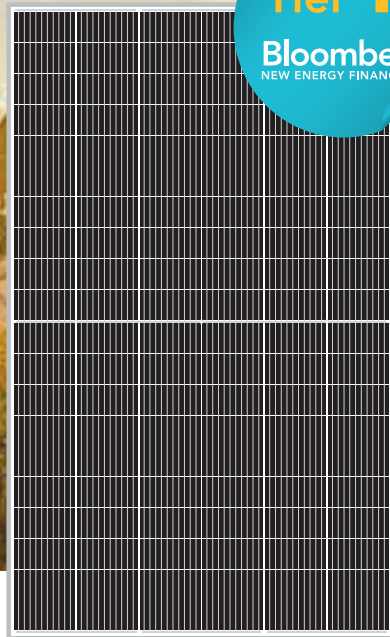


# AB66MHC

## 490-505W

132 (2x(6x11)) 2094 x1134x35 mm



### WHY ABI SOLAR?

Manufacturing and assembly of PV modules are performed only on East Asian enterprises from **Bloomberg Tier 1** list. PV modules are tested and demonstrate high reliability in various climatic conditions and in a wide range of insolation. High efficiency and return on investment guaranteed around the world. Maximum power and performance at minimal price ensure fast return of investments. Compatibility with both on-grid and off-grid PV systems guaranteed.



Half-cut cell technology New circuit design, lower internal current, lower Rs loss



Resistance to power attenuation passed TÜV Rheinland system voltage endurance test



Special circuit design with much lower hot spot temperature



Resistance to salt-spray corrosion (IEC61701, certified to TÜV Rheinland test standard)



Fire safety (Class C, certified to TÜV Rheinland and Rheinland test standards)

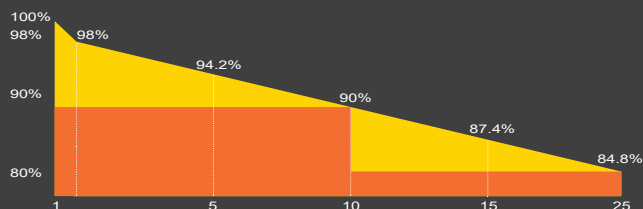


100% triple EL test enabling remarkable reduction of hidden crack rate of modules

### INDUSTRY-LEADING WARRANTY

**15 year**  
Manufacturing Warranty

**25 year**  
84.8% Power Output



■ Standard Performance Warranty ■ Abi-Solar Linear Warranty

IEC61215, IEC61730, IEC61701, IEC62716, UL61730

ISO9001, ISO1400, OHSAS 18001

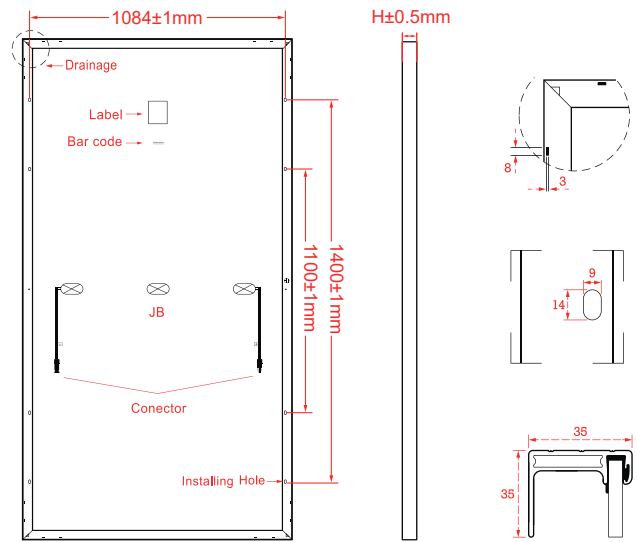


[www.abi-solar.com](http://www.abi-solar.com)



## MECHANICAL SPECIFICATIONS

Cell type	Perc Mono crystalline 132 (2x(6x11)), 182x91 mm
Dimensions (AxBxC)	2094 x1134x35 mm
Weight	25.3 kg
Font glass	Tempered, 3.2 mm AR, High transmittance
Frame	Anodized aluminium alloy
Junction Box	IP68
Connector	MC4 Compatible
Output cables	4.0 mm <sup>2</sup> , wire length: 300 mm
Container	40HQ
Pieces per Pallet	31
Pallets/container	22
Pieces per Container	682



## ELECTRICAL CHARACTERISTICS (STC)

	AB490 66MHC	AB495 66MHC	AB500 66MHC	AB505 66MHC
Maximum Power (Pmax)	490W	495W	500W	505W
Shot Circuit Current (Isc)	13.71A	13.78A	13.85A	13.92A
Open Circuit Voltage (Voc)	45.25V	45.34V	45.43V	45.52V
Maximum Power Current (Impp)	13.15A	13.26A	13.37A	13.48A
Maximum Power Voltage (Vmpp)	37.27V	37.34V	37.41V	37.48V
Module Efficiency	20.64%	20.85%	21.06%	21.27%
Power Tolerance	(0~+5W)			
Maximum System Voltage	1500			
Maximum load	5400 Pa			
Maximum Series Fuse	25A			

## NOCT

	AB490 66MHC	AB495 66MHC	AB500 66MHC	AB505 66MHC
Maximum Power (Pmax)	365W	369W	373W	376W
Shot Circuit Current (Isc)	11.11A	11.17A	11.24A	11.31A
Open Circuit Voltage (Voc)	42.54V	42.61V	42.71V	42.79V
Maximum Power Current (Impp)	10.54A	10.63A	10.73A	10.79A
Maximum Power Voltage (Vmpp)	34.66V	34.72V	34.79V	34.86V

**STC irradiance:** 1000 W/m<sup>2</sup> module temperature: +25 AM=1.5

**NOCT irradiance:** 800 W/m<sup>2</sup> module temperature: +20 AM=1.5

## TEMPERATURE CHARACTERISTICS

Nominal Operating Cell Temperature (NOCT)	45±2 °C
Temperature coefficient of Pmax	-0.35 %/°C
Temperature coefficient of Voc	-0.28 %/°C
Temperature coefficient of Isc	0.045 %/°C
Operating Temperature	-40~+85 °C

## TEMPERATURE CHARACTERISTICS

