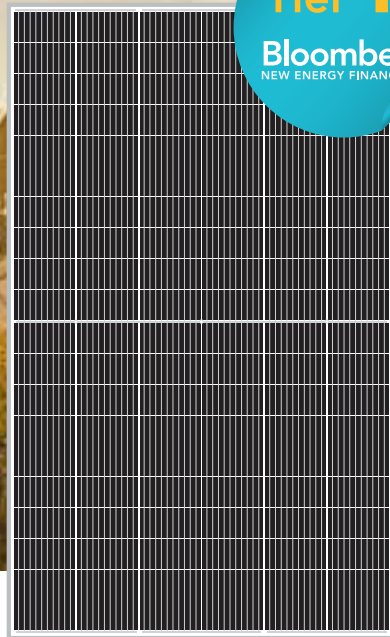


# AB60MHC

## 450-460W

120 (6x20) 1903x1134x30 mm



## WHY ABI SOLAR?

Manufacturing and assembly of PV modules are performed only on East Asian enterprises from **Bloomberg Tier 1** list. PV modules are tested and demonstrate high reliability in various climatic conditions and in a wide range of insolation. High efficiency and return on investment guaranteed around the world. Maximum power and performance at minimal price ensure fast return of investments. Compatibility with both on-grid and off-grid PV systems guaranteed.



Half-cut cell technology New circuit design, lower internal current, lower Rs loss



Resistance to power attenuation passed TÜV Rheinland system voltage endurance test



Special circuit design with much lower hot spot temperature



Resistance to salt-spray corrosion (IEC61701, certified to TÜV Rheinland test standard)



Fire safety (Class C, certified to TÜV Rheinland and Rheinland test standards)

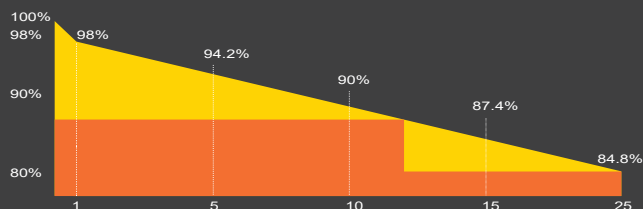


100% triple EL test enabling remarkable reduction of hidden crack rate of modules

## INDUSTRY-LEADING WARRANTY

**15 year**  
Manufacturing Warranty

**25 year**  
84.8% Power Output



■ Standard Performance Warranty ■ Abi-Solar Linear Warranty

IEC61215, IEC61730, IEC61701, IEC62716, UL61730

ISO9001, ISO1400, OHSAS 18001

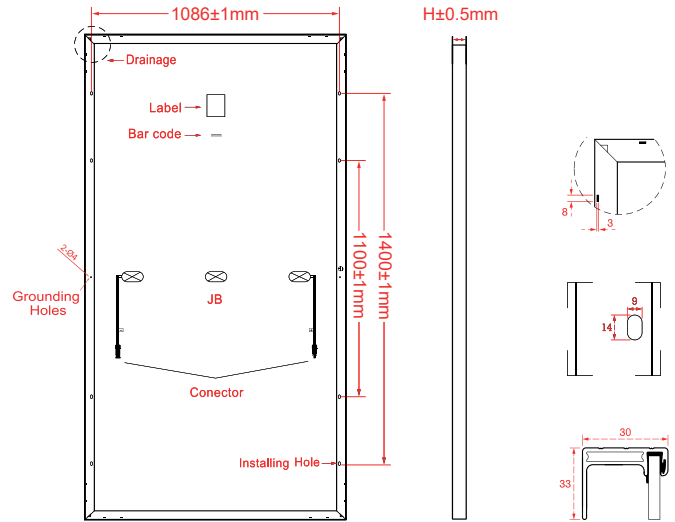


[www.abi-solar.com](http://www.abi-solar.com)



## MECHANICAL SPECIFICATIONS

Cell type	Perc Mono crystalline 120 (6×20), 182×9 mm
Dimensions (A×B×C)	1903×1134×30 mm
Weight	24 kg
Font glass	Tempered, 3.2 mm AR, High transmittance
Frame	Anodized aluminium alloy
Junction Box	IP68
Connector	MC4 Compatible
Output cables	4 mm <sup>2</sup> , 300 mm
Container	40HQ
Pieces per Pallet	36
Pallets/container	24
Pieces per Container	864



## ELECTRICAL CHARACTERISTICS (STC)

	AB450 60MHC	AB455 60MHC	AB460 60MHC
Maximum Power (Pmax)	450W	455W	460W
Shot Circuit Current (Isc)	13.47A	13.54A	13.59A
Open Circuit Voltage (Voc)	41.46V	41.65V	41.85V
Maximum Power Current (Impp)	13.01A	13.09A	13.17A
Maximum Power Voltage (Vmpp)	34.62V	34.78V	34.95V
Module Efficiency	20.85%	21.08%	21.32%
Power Tolerance		(0~+5W)	
Maximum System Voltage		1500	
Maximum load		5400 Pa	
Maximum Series Fuse		25A	

## NOCT

	AB450 60MHC	AB455 60MHC	AB460 60MHC
Maximum Power (Pmax)	335W	339W	343W
Shot Circuit Current (Isc)	10.91A	10.97A	11.01A
Open Circuit Voltage (Voc)	38.97V	39.15V	39.34V
Maximum Power Current (Impp)	10.41A	10.48A	10.55A
Maximum Power Voltage (Vmpp)	32.19V	32.35V	32.52V

**STC irradiance:** 1000 W/m<sup>2</sup> module temperature: +25 AM=1.5

**NOCT irradiance:** 800 W/m<sup>2</sup> module temperature: +20 AM=1

## TEMPERATURE CHARACTERISTICS

Nominal Operating Cell Temperature (NOCT)	45±2 °C
Temperature coefficient of Pmax	-0.35 %/°C
Temperature coefficient of Voc	-0.28 %/°C
Temperature coefficient of Isc	0.045 %/°C
Operating Temperature	-40~+85 °C

## TEMPERATURE CHARACTERISTICS

